



UNIVERSITY OF ILLINOIS ALUMNI ASSOCIATION

November 20, 2008

To: Dr. Eric Gislason, UIC Interim Chancellor
Dr. Michael Tanner, Provost
Mr. Loren Taylor, President and CEO - University of Illinois Alumni Association
Mr. Thomas Vogelsinger - Chair, UIAA Board of Directors
UIC Deans

From: Arlene Norsym, Associate Chancellor and Vice President of Alumni Relations

Re: **Report on 2008 Exit Survey Conducted at UIC**

Introduction

For the past 6 years the University of Illinois Alumni Association (UIAA), in cooperation with the UIC colleges, has distributed Exit Surveys to graduating students. The information collected provides the university with a snapshot of satisfaction as well as current e-mail and contact information, and also helps us plan alumni programs based on interest.

Sample Size and Process

Approximately 5,000 students were candidates for graduation this year. This report includes data from February 2008 through September 2008. Students could access the Exit Survey either online, via e-mail or complete hard copies, depending on the preferences of each college. The majority of responses were received online which helped to reduce administrative time and input errors. A total of 2,379 responses were received, approximately 47% of graduates responding, a 1.7% increase from 2007. Following is an Executive Summary with appendices as shown below.

Appendix A - Copy of the Exit Survey, data on degree obtained and future plans

Appendix B - Campus report; east and west side campus breakdowns

Appendix C - Interest in future programs and services

Appendix D - Information on family legacy

Appendix E - Breakdown of respondents ethnicity

Executive Summary

Exit Survey (Appendix A)

A copy of the Exit Survey, data on degree earned and post graduation data are included. With regard to future plans, 53.2% of graduates have full-time employment, 17.7% plan to pursue advanced educational opportunities and 23.3% are currently job searching. *(Individual responses are available should a college wish to use this information for its own departmental purposes.)*

Overall Satisfaction (Appendix B)

A significant majority of those who responded were pleased with their academic experience at UIC. Seventy seven percent of the respondents rated their overall experience as either "positive" or "extremely positive." The positive and extremely positive combined response from graduates on the east campus (76.2%) was slightly lower than those on the west campus (80%). Over seventy six percent of graduates indicated a positive or extremely positive rate at the departmental level, which is slightly down from the 78% reported in 2007. Seventy five percent of the east campus and 81.4% of the west campus reported a positive or extremely positive experience at the departmental level. This survey does not make it possible to determine factors that may have contributed to these responses.

Interest in Future Programming & Services (Appendix C)

The data collected shows that networking is the area of most interest to graduates with 61.1% indicating interest of some kind. The second and third most requested items were continuing education (60.8%) and career counseling (53.1%), followed by free lifetime e-mail (46.8%).

Approximately 33.6% of graduates expressed interest in receiving the UIC Alumni Magazine or their college magazine. Interest was expressed in college activities by 35% and 28.5% were interested in regional activities. Twenty eight percent of graduates indicated interest in attending UIC athletic programs.

Legacy (Appendix D)

Again this year, we asked graduates if they had a family member who attended or currently attend any of the University of Illinois campuses. Thirty five percent indicated a "yes" response. Of those responding "yes," 62.0% indicated that a family member attended the UIC campus and 30.5% had a family member who attended UIUC. Additionally, 6.8% of respondents reported having family members currently attending, or having previously attended more than one campus.

Ethnicity of Respondents (Appendix E)

In the Spring of 2008 an optional ethnicity question was added to the survey. The breakdown is as follows: White-Non-Hispanic (45.6%), Asian or Pacific Islander (24.8%), Hispanic or Latino (11.7%), Black/African American/Non-Hispanic (7.4%). Nearly three percent responded as "other" and 7.6% opted not to answer.

Student Involvement

Information on student involvement in campus groups and organizations was also collected. Colleges can request this detailed information from the UIAA. Information from this survey will be posted, as past reports are available for review, on the UIC Data Research and Institutional Analysis (DRIA) website at www.dria.uic.edu.

Conclusion

We believe the Exit Survey is a valuable tool that has been made even more effective with input from the various college/departments. Our office works each year to improve the content and quality of the survey. We continue to request that all units encourage their students to complete the online version of the survey in order to reduce administrative time and costs. If you have any questions regarding the information in this report, please contact Jennifer Lewis at 312-996-8535 or jlewis2@uic.edu.

CC:

UIC Vice Chancellors
UIC Directors & Department Heads
Jack Pierce, CFO - UIAA
Karen Tow, COO - UIAA
ARC Members
C-CAR Members
Commencement Committee
College Commencement Contacts
UIAA Alumni Career Center
UIAA Staff - Chicago



UNIVERSITY OF ILLINOIS ALUMNI ASSOCIATION

2008 EXIT SURVEY

Appendix A

GRADUATION SURVEY UIC CAMPUS



Complete your Graduation Survey
on line at www.uiaa.org/chicago

Or Mail this form to:
750 South Halsted Street, 5th Floor (MC 021)
Chicago, Illinois 60607

Your University ID Number _____

College _____

Major _____

Degree Bachelors Masters Doctorate

Are you a member of Honors College? Yes No

Last Name _____

First _____

Middle _____

Your ethnicity American Indian/Alaskan Native Asian or Pacific Islander Black/ African American/ Non-Hispanic
 Hispanic or Latino White/ Non-Hispanic Other

Where will you be residing after graduation?

Address _____

City _____

State _____

Zip/Country Code _____

Phone _____

E-mail (non UIC) _____

On a scale 1–5 (1 is lowest score and 5 highest), how would you rate:

___ Your overall experience at UIC?

___ Your overall experience within your major/department?

___ Your familiarity with the Collegiate Membersip program provided by the Alumni Association?

___ The effectiveness of the Collegiate Membership program in helping you learn about the different benefits and services of the University of Illinois Alumni Association?

How interested are you in the following Alumni Activities:

___ Continuing Education

___ Career Counseling Services

___ Regional Alumni Activities

___ Networking (Business/Social)

___ UIC Alumni Magazine

___ Athletic Events

___ Free Lifetime E-mail

___ College Alumni Activities

What are your plans after graduation? Full-time job Graduate School Job Searching Other

If known, please tell us where you will be working or attending school:

Company/School Name _____

Title _____

Address/City/State _____

Do you have family members who attended any of the University of Illinois Campuses?

Name _____

Relationship _____

Campus _____

Name _____

Relationship _____

Campus _____

Student Involvement Were you a Class Officer Member of your College Student Council/Association/Government

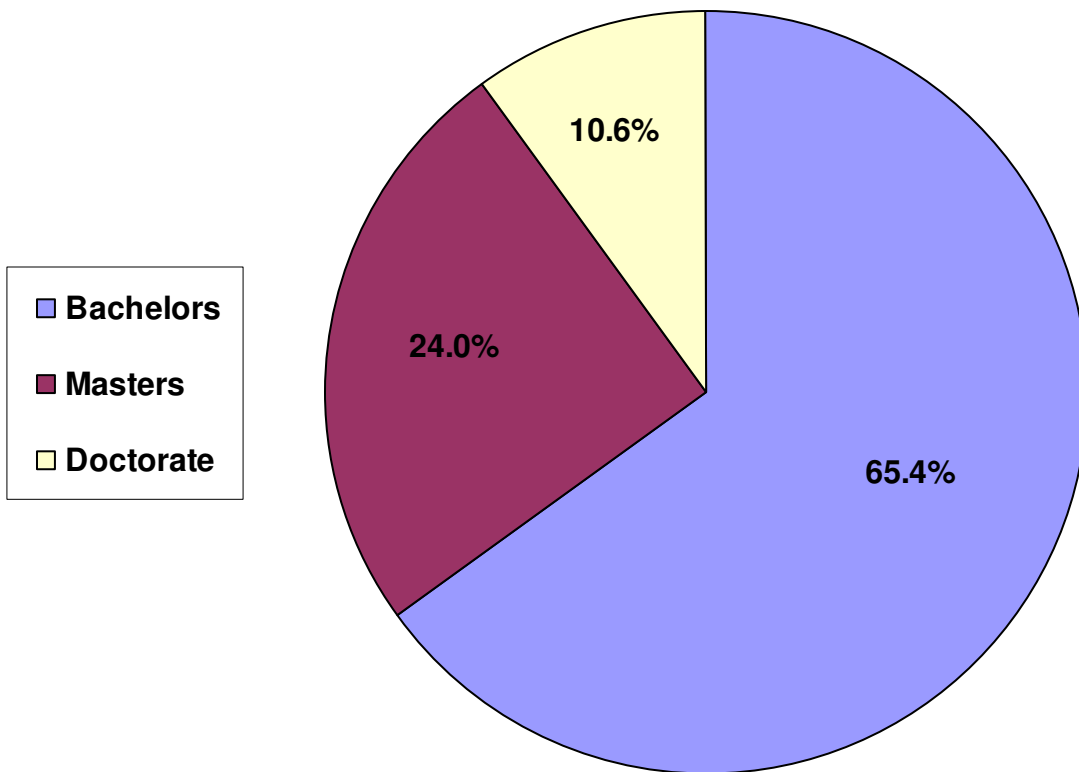
We want to keep you connected and informed, please turn over and check all student organizations of which you were a member or had interest in at UIC: (If any organizations you were a member of are not listed, please write them in.)

TURN OVER >

- _2018 Co-opt
- _Academy of Managed Care Pharmacy (AMCP)
- _Access
- _Accounting Club
- _Adolescent Substance Abuse Program
- _African American Academic Network Ambassadors
- _African Student Union
- _Africa In Alliance
- _AIGA
- _Alchemy Society
- _Alpha Delta Rho Multicultural Sorority
- _Alpha Kappa Alpha Sorority, Incorporated
- _Alpha Kappa Delta Phi
- _Alpha Kappa Phi Eta Rho
- _Alpha Omega Alpha Honor Medical Society
- _Alpha Phi Alpha Fraternity Inc.
- _Alpha Phi Omega
- _Alpha Psi Lambda Inc.
- _Alpha Sigma Tau National Sorority
- _Alternative Spring Break
- _ANR-MSS
- _American Association of Indian Pharmacists in America
- _American Association of Pharmaceutical Scientists (AAPS)
- _American Association of Pharmaceutical Scientists (AAPS) Student Chapter
- _American Association of Women Dentists (AAWD)
- _American Institute for Chemical Engineers
- _American Institute of Architecture Students-UIC Chapter
- _American Medical Student Association
- _American Medical Women's Association
- _American Pharmacists Association-Academy of Student Pharmacists (APA-ASP)
- _American Red Cross Club
- _American Sign Language and Deaf Culture Club
- _American Society of Civil Engineers
- _American Society of Mechanical Engineers
- _Applied Health Sciences Student Council
- _ARQUITECTOS
- _Art History Graduate Student Association
- _Art of Living
- _Asian American Coalition Committee
- _Asian American Internship
- _Asian American Mentor Program
- _Asian American Students in Alliance
- _Asian Pacific American Medical Student Association (APAMSA)
- _Asian Pharmacists Association
- _Association of Graduate Students of Politics
- _Association of Pre-Medical Students
- _Association of Pre-Professional Students
- _BE MT Health/HSAISS Club
- _Brazil Students Association
- _Best Buddies
- _Beta Beta Beta
- _Biomedical engineering society
- _Black Association of Preaching Student
- _Black Greek Council
- _Black Student Union
- _Blood Suckers
- _Body and Brain Club
- _Broken Silence Dance Group
- _Bulgarian Students Club
- _Calleitos Latin Dance Team
- _Campus Anti-war
- _Campus Christian Ministry
- _Campus Grassroots for Christ: Chicago Cru
- _Capovins Club
- _Catholic Medical Students' Association
- _Chi Sigma Tau Fraternity
- _Chicago Anime Society
- _Chicago Circle Philosophy Discussion Group
- _Chicago Circle Players
- _Chicago Dance Marathon
- _Chicago Engineering Design Team
- _Chicago Medical Student Council
- _Chicago's Italian American Organization
- _Chinese American Student Association (CAUSA)
- _Chinese American Student Dental Association
- _Chinese Drama Organization
- _Chinese Students and Scholars Association
- _Christians on Campus
- _Christian Medical Association
- _Christian Pharmacists Fellowship International
- _Christian Youth Fellowship
- _Christians on Campus
- _Class of 2010 Mo Board
- _Classics Club
- _Climbing Club
- _Club, v1
- _College Congressional Debate Association of Chicago
- _College of Cycling
- _College of Medicine Writer Ball
- _College of Nursing Student Council
- _College of Nursing Student Council
- _College of Pharmacy Class of 2008
- _College of Pharmacy Class of 2009
- _College of Pharmacy Class of 2010
- _College Republicans
- _College of Legislators
- _College of Legislators
- _College of Entrepreneurs' Organization Graduate Chapter
- _College of Finance Organization
- _College of Marketing Association
- _COM Peoria Student Gov Association
- _Communication Society
- _Community Drug Education Committee
- _Computer Science Graduate Students Association
- _Confederation of Latin American Students
- _Conversion Fellowship
- _Copies for Christ Youth
- _CoRoasts
- _Cycling and Triathlon Team
- _Delta Phi Epsilon
- _Delta Phi Omega Sorority, Inc.
- _Delta Sigma Pi Alpha Sigma Omega
- _Delta Sigma Theta Sorority Inc.
- _Delta Xi Phi Multicultural Sorority, Inc.
- _Dental Student Council
- _Diversity Class of 2008
- _Dkamal
- _Dkamaka
- _Diversity Group
- _Donate by Design
- _Eastern Europeans in Medicine
- _EcoCampus
- _Emergency Life Support for Civilian Victims of War
- _Emergency Medicine Interest Group
- _Engineering Council
- _Engineers Without Borders
- _Eta Kappa Nu
- _Elysa: Chinese Children Fellowship
- _Fellowship of Christian Students
- _Feminists United
- _Feeling Club
- _PhiPhi in Alliance
- _Flawless Dancers
- _Free Food Fridays
- _Freedom Alliance
- _Friends of Spartacus Youth Club
- _Future Minority Leaders of Chicago
- _Gallatin Pastors' Organization
- _Gamma Phi Omega International Sorority, Inc.
- _Golden Key International Honour Society
- _Graduate Student Association of Chemical Engineering
- _Graduate Student Council
- _Graduate Student Organization (GSO)
- _Graduate Students in Education (GSE)
- _Greater Text
- _Health Oriented Latino Association
- _Health Professions Student Council
- _Hellenic Students Organization
- _Hermandad de Sigma Iota Alpha, Inc. and Bask-SA
- _Hinda Students Council
- _Hispanic Student Dental Association
- _Hispanic Student Dental Association
- _History Graduate Society
- _Honors College Advisory Board (HCAB)
- _Honors College String Ensemble
- _Hwa Rang Do/Tae Soo Do Club
- _IEEE
- _Illinois ASCA
- _Illinois Council of Health-System Pharmacists
- _Illinois Student Occupational Therapy Association
- _Illinois-Chicago Football Club
- _Indian Graduate Students Association
- _Indian Students Association
- _Institute for Operations Research and Management Sciences (INFORMS)
- _Institute of Industrial Engineers
- _Interested Ladies of Lambda Theta Alpha Late Sorority, Inc.
- _International Christian Connection
- _International Christian Connection
- _International Club
- _International Impact
- _International Socialist Club
- _Islamic Network of Christiana and University Students (INCUIS)
- _Jane Addams Student Government
- _Japan Karate Association of Chicago
- _Japanese Nin Society of Chicago (JNSC)
- _Jewish Educational Team
- _Jewish Health Professional Society
- _JPhi Mentoring Club
- _Jude Theory
- _Just Golf
- _Kappa Alpha Psi Fraternity Inc.
- _Kappa Psi
- _Korean Americans United Serving Equality
- _Korean Graduate Students Association ("KGSA")
- _La Raza Medical Student Association
- _Lambda Zeta Chi
- _Lambie, Gay, Bisexual, and Transgender People in Medicine
- _Luvina Hibel Jewish Student Association
- _Mi Class Board of 2013
- _Mi COOPS
- _Mo COOPs Class 2009
- _Management Club
- _Math Graduate Student Association
- _Math Staff Feed / 858
- _Mathematics Club
- _MBA Association
- _Medical Students for Choice
- _Men Against Sexual Violence
- _Men's Club Volleyball
- _Men's Ultimate Frisbee Club
- _Men's Water Polo
- _Mexican Students de Artes
- _Minority Association of Pre-Health Students
- _Minority Students for the Advancement of Public Health (MSAPH)
- _Model United Nations Illinois Chicago
- _Mojo Pie
- _Multi-Ethnic Interservice Christian Fellowship
- _Muslim Pharmacy Student Association
- _Muslim Student Action Network
- _Muslim Students Association
- _Muslim Women's Association
- _MJK (Pasta (North Korean Pasta))
- _National Asian American Society of Accountants
- _National Association of Black Accountants
- _National Panhellenic Conference
- _National Society of Black Engineers
- _National Society of Collegiate Scholars
- _Native American Student Organization
- _New Life Volunteering Society
- _Newman Student Organization
- _No Experience Necessary
- _Nuclear Medicine Interest Group
- _Nurse's Christian Fellowship
- _Omega Delta Fraternity INC.
- _Omega Phi Alpha Psi Co-Ed Fraternity Inc.
- _Oregon Kappa Upsilon - Sigma Chapter
- _One World Chicago
- _Palatial Leadership Association of Youth
- _Pakistani Student Association
- _Park-Ovis Tour
- _Pediatric Interest Group
- _Pharmacy Student Council
- _Pharmacy Writer Gala
- _Phi Beta Sigma Fraternity Incorporated
- _Phi Delta Chi Professional Pharmacy Fraternity
- _Phi Kappa Psi Fraternity
- _Phi Lambda Sigma
- _Phi Sigma Sigma
- _Phys. Ed. Action
- _Pi Tau Sigma - Alpha Sigma Chapter
- _Piessess Network UIC
- _Platform
- _Polish American Student's Association
- _Pre-dental club
- _Pre-Law Society
- _Pre-Optometry Club
- _Pre-Pharmacy Club
- _Pre-Physical Therapy Club
- _Pre-Veterinary Student Association
- _Primo Dance Troupe
- _Project ESTEEM
- _Project Focus
- _Psi Chi
- _Public Administration Student Association
- _Public Health Student Association
- _Rafelior RUSH Coalition Collegiate Chapter of University of Illinois at Chicago
- _Rationalists and Free thinkers
- _Real Estate Group
- _Residence Hall Association
- _Rho Chi Pharmacy Honor Society
- _Rho Pi Phi International Fraternity Delta Kappa Sigma Chapter
- _Rockford Medical Student Council
- _Russian Club
- _Serbia Club
- _Servants
- _Showstopper Entertainment
- _Sigma Alpha Epsilon
- _Sigma Alpha Mu Fraternity, Gamma Epsilon Chapter
- _Sigma Beta Rho Fraternity, Inc.
- _Sigma Gamma Rho Sorority Inc.
- _Sigma Lambda Beta
- _Sigma Lambda Gamma National Sorority
- _Sikh Students Association
- _Sisters United for Educational Support
- _Society for the Advancement of Oricanos and Native Americans in Science
- _Society of Anthropology
- _Society of Hispanic Professional Engineers
- _Society of Prospective Surgeons
- _Society of Seekers
- _Soka Gakkai International Student Buddhist Organization
- _South Asian Medical Students Association
- _SriLankan Graduate Students Association
- _Stand for Human Rights at UIC
- _Student Advisory Board for the Humanities in Nursing
- _Student Alumni League
- _Student Association of Medical Artists
- _Student Branch of the American Society of Heating, Refrigerating and Air-Conditioning Engineers
- _Student Chapter of the Association for Computing Machinery at the University of Illinois at Chicago.
- _Student National Dental Association
- _Student National Medical Association-UIC Chapter
- _Student National Pharmaceutical Association (SNPA)
- _Student Nurses Association
- _Student Outreach Services
- _Student Research Group
- _Student Run Free Clinic
- _Students for Immigrants rights
- _Students for Social Justice
- _Students of Urban and Public Affairs
- _Students Who Apply the Truth
- _Students Who Apply the Truth (SWAT)
- _Students Without Religious Dogma
- _Swamantak
- _Tad Beta Pi
- _Tau Kappa Epsilon Fraternity
- _Tau Phi Sigma
- _Terra Society
- _The Campus Bodhi Tree
- _The Dodgeball Club
- _The Fishing Club
- _The Journal for Pre-Health/Related Students
- _The Real Estate Group
- _The Society of Future Physicians
- _The Society of Women Engineers
- _Theta Xi Fraternity
- _Think Outside the Bottle
- _Turkish Intercultural Club, TIC
- _UIC Chapter of Interservice Council (IC)
- _UIC Colleges Against Cancer
- _UIC Concert Band
- _UIC Economics Club
- _UIC Investment Society
- _UIC Men's Rugby Club
- _UIC Baseball Club
- _UIC Rates
- _UIC Students for Immigrant Rights
- _UIC Ukrainian Students Association
- _UIC-HSA
- _UICOMP Student Government Association
- _Undergraduate Research Symposium Steering Committee
- _Union for Puerto Rican Students
- _United Deal Association
- _Unity in Christ Gospel Chorus
- _University Bible Fellowship
- _University Choir
- _University Medical Student Council
- _University of Illinois at Chicago Electric Vehicle Association
- _University of Illinois Medical Center Emergency Department Volunteering Program
- _Urban Health Program's Pre-Health Student Organization
- _Urban Planning and Policy Student Association (UPPSA)
- _Urban Student Association
- _Veterans in Engineering
- _Vietnamese Student Association
- _Volunteer Leadership Committee
- _Water Polo
- _Wellness Advocates Volunteering to Educate Students (WAVES)
- _Women's Rugby Club
- _Women's Ultimate Frisbee
- _Zeta Phi Beta Sorority Inc., Alpha Alpha Chapter
- _Zeta Psi Fraternity of North America Inc.

UIAA – UIC Graduating Student Exit Survey AY 2007 - 2008

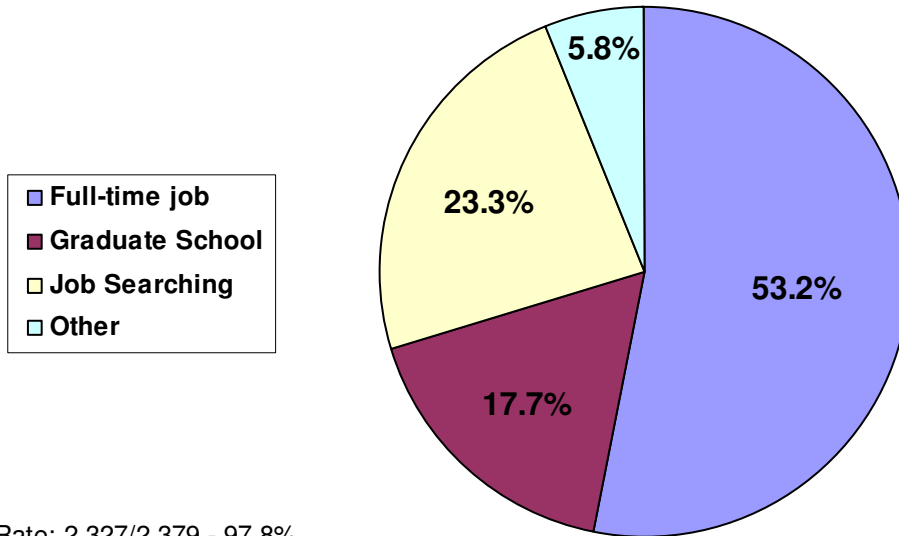
Degree earned
(east and west campus combined response)



Response Rate: 2,379/2,379 - 100%

UIAA – UIC Graduating Student Exit Survey AY 2007 - 2008

What are your plans after graduation?
(east and west campus combined response)



Response Rate: 2,327/2,379 - 97.8%



UNIVERSITY OF ILLINOIS ALUMNI ASSOCIATION

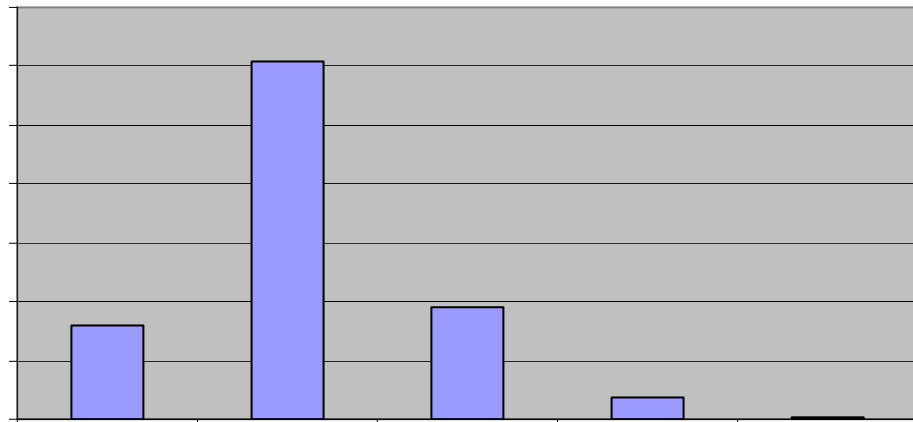
2008 EXIT SURVEY

Appendix B

UIAA – UIC Graduating Student Exit Survey AY 2007 - 2008

**How would you rate your overall experience at UIC?
(east and west campus combined response)**

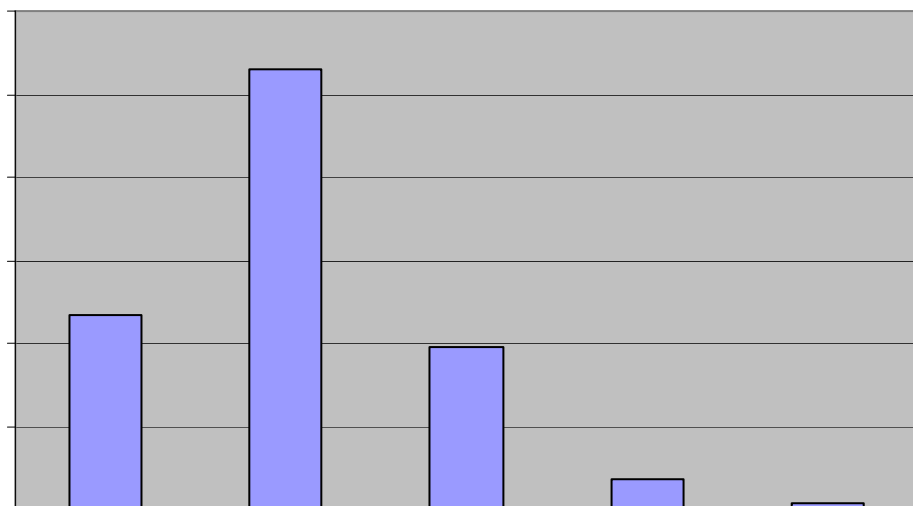
Response Rate:
2,379/2,379 - 100%



■ Combined Response	16.1%	60.9%	18.9%	3.6%	0.5%
---------------------	-------	-------	-------	------	------

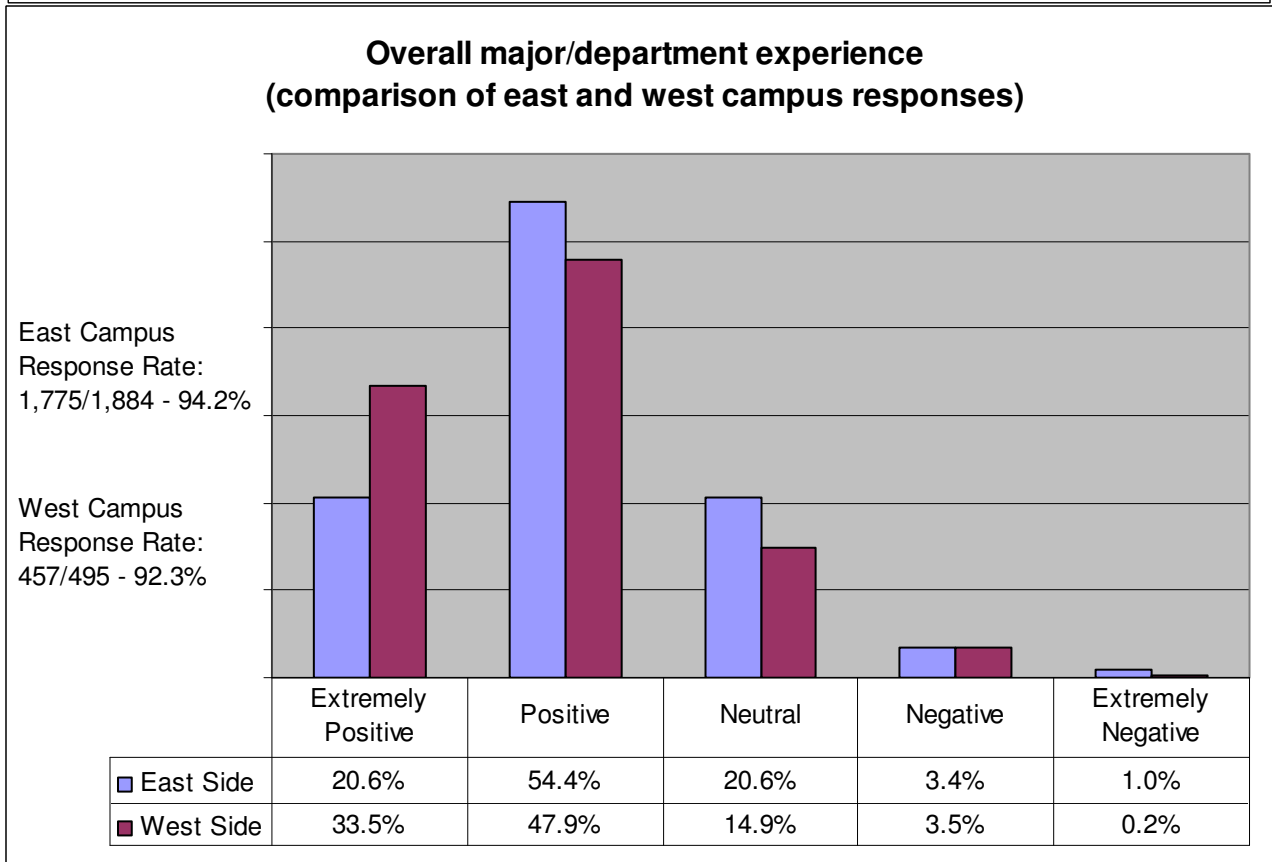
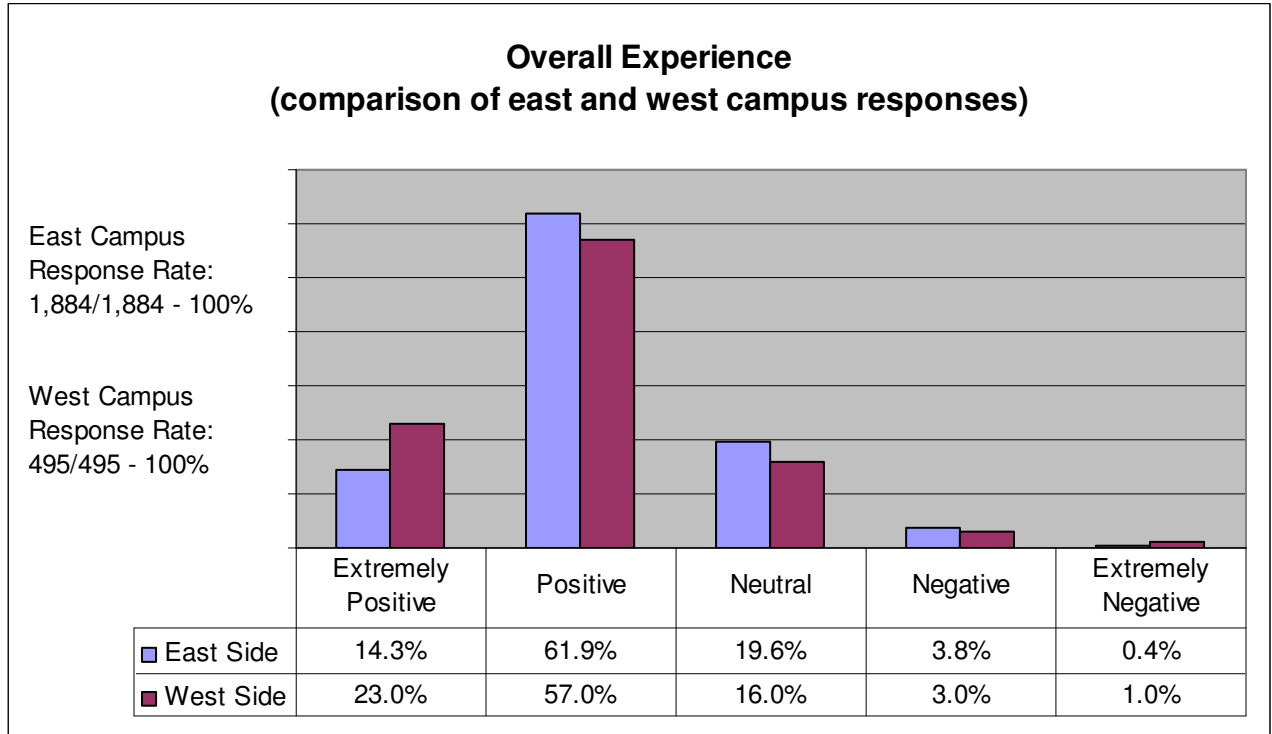
**How would you rate your overall experience in your
major/department?
(east and west campus combined response)**

Response Rate:
2,379/2,379 - 100%



■ Combined Response	23.3%	53.0%	19.5%	3.5%	0.7%
---------------------	-------	-------	-------	------	------

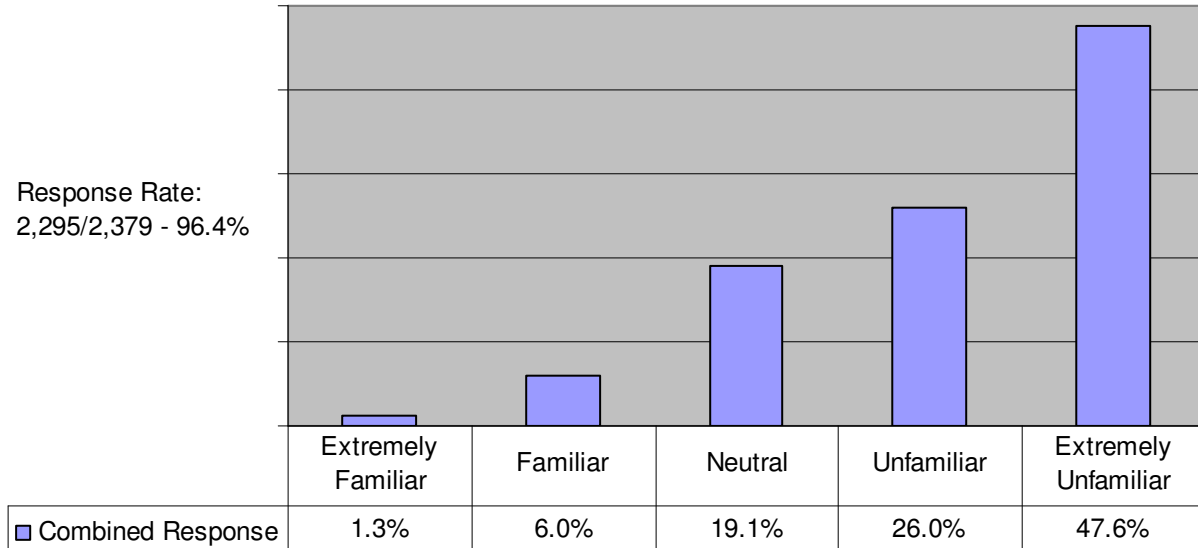
UIAA – UIC Graduating Student Exit Survey AY 2007 - 2008



UIAA – UIC Graduating Student Exit Survey AY 2007 - 2008

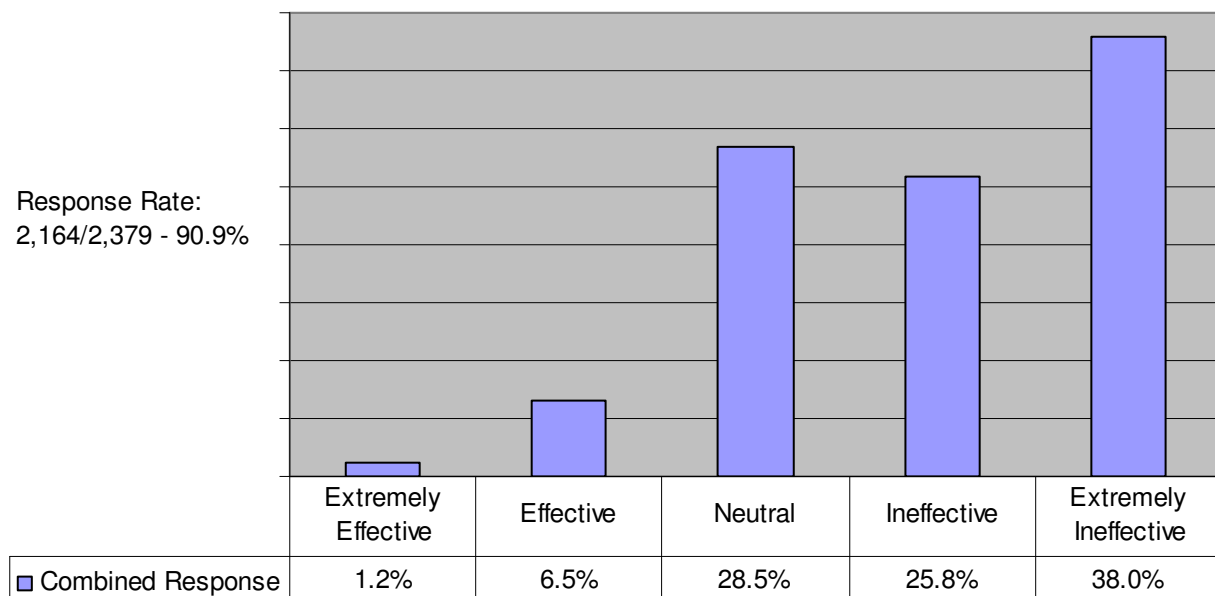
**How familiar are you with the Collegiate Membership Program?
(east and west campus combined response)**

Response Rate:
2,295/2,379 - 96.4%



**How would you rate the effectiveness of the Collegiate Membership Program in helping you learn about the benefits and services of the University of Illinois Alumni Association?
(east and west campus combined response)**

Response Rate:
2,164/2,379 - 90.9%





UNIVERSITY OF ILLINOIS ALUMNI ASSOCIATION

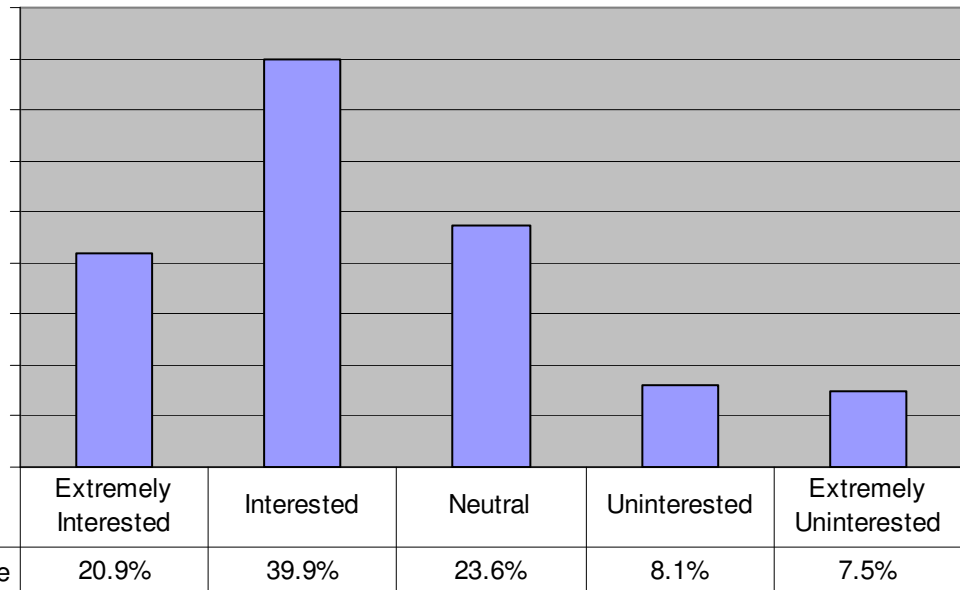
2008 EXIT SURVEY

Appendix C

UIAA – UIC Graduating Student Exit Survey

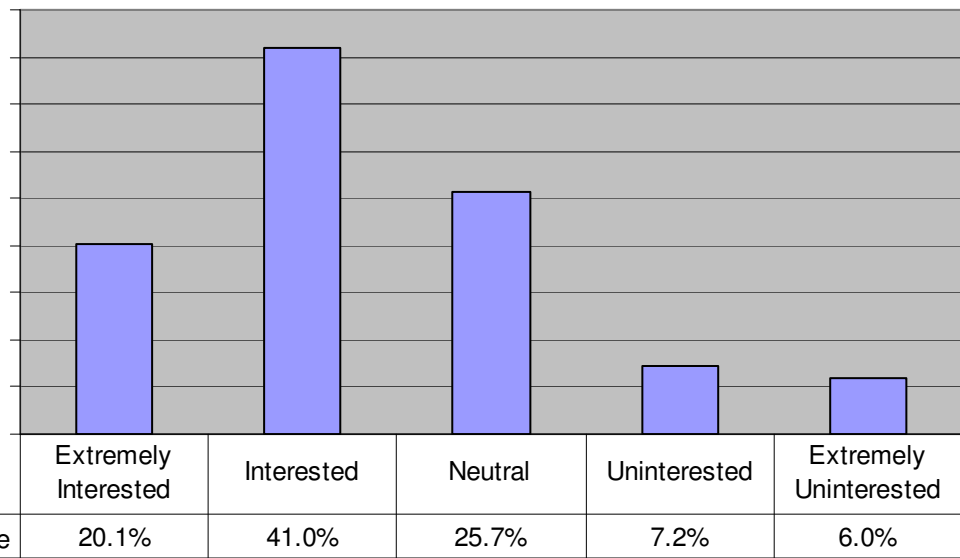
Interest in Alumni Activities: Continuing Education (east and west campus combined response)

Response Rate:
2,259/2,379 - 95%



Interest in Alumni Activities: Networking (east and west campus combined response)

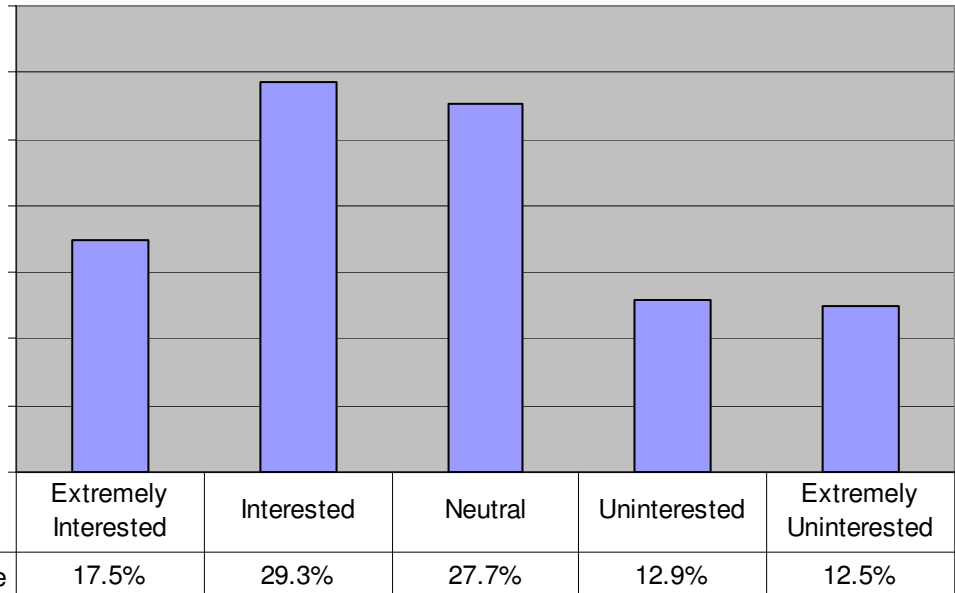
Response Rate:
2,251/2,379 - 94.6%



UIAA – UIC Graduating Student Exit Survey AY 2007 - 2008

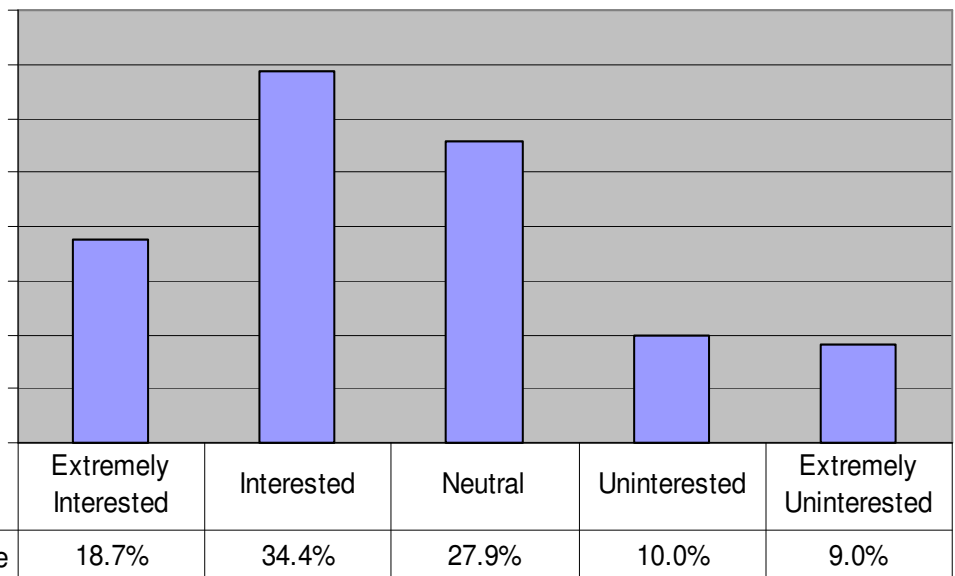
Interest in Alumni Activities: Free Lifetime E-mail (east and west campus combined response)

Response Rate:
2,255/2,379 - 94.7%

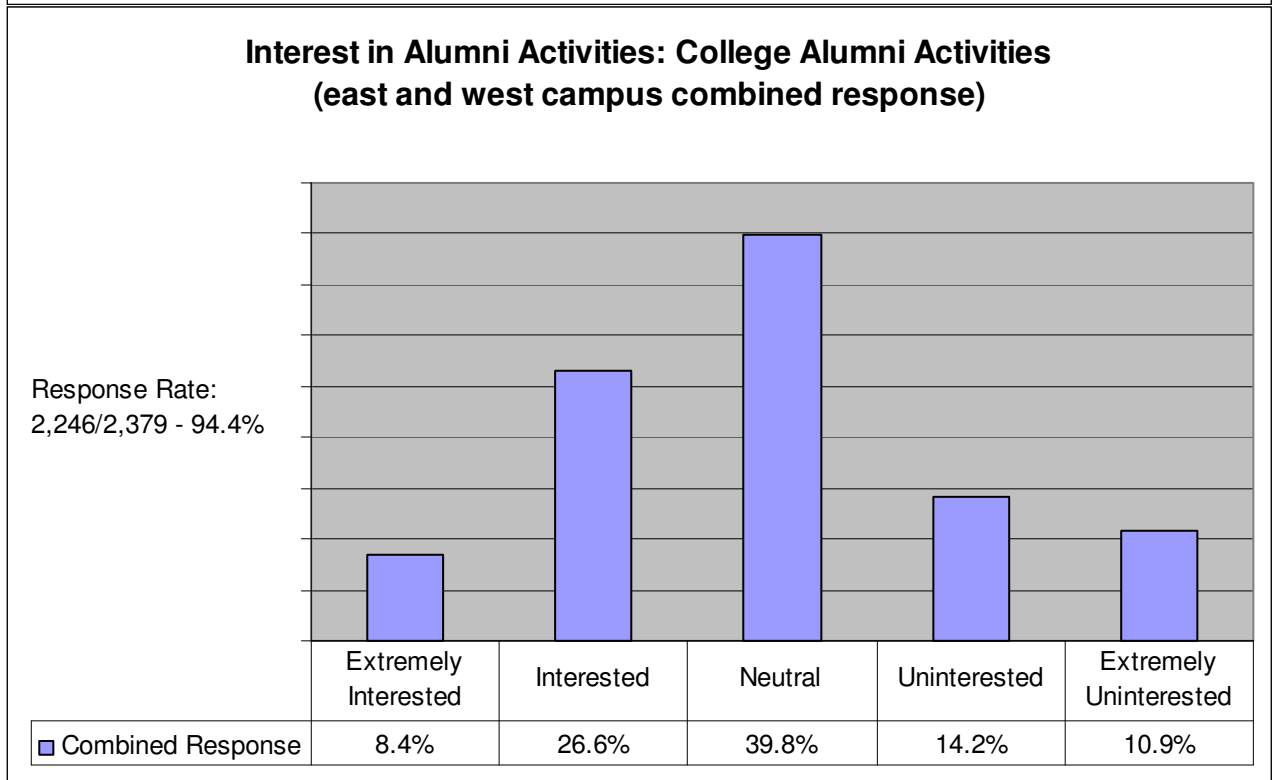
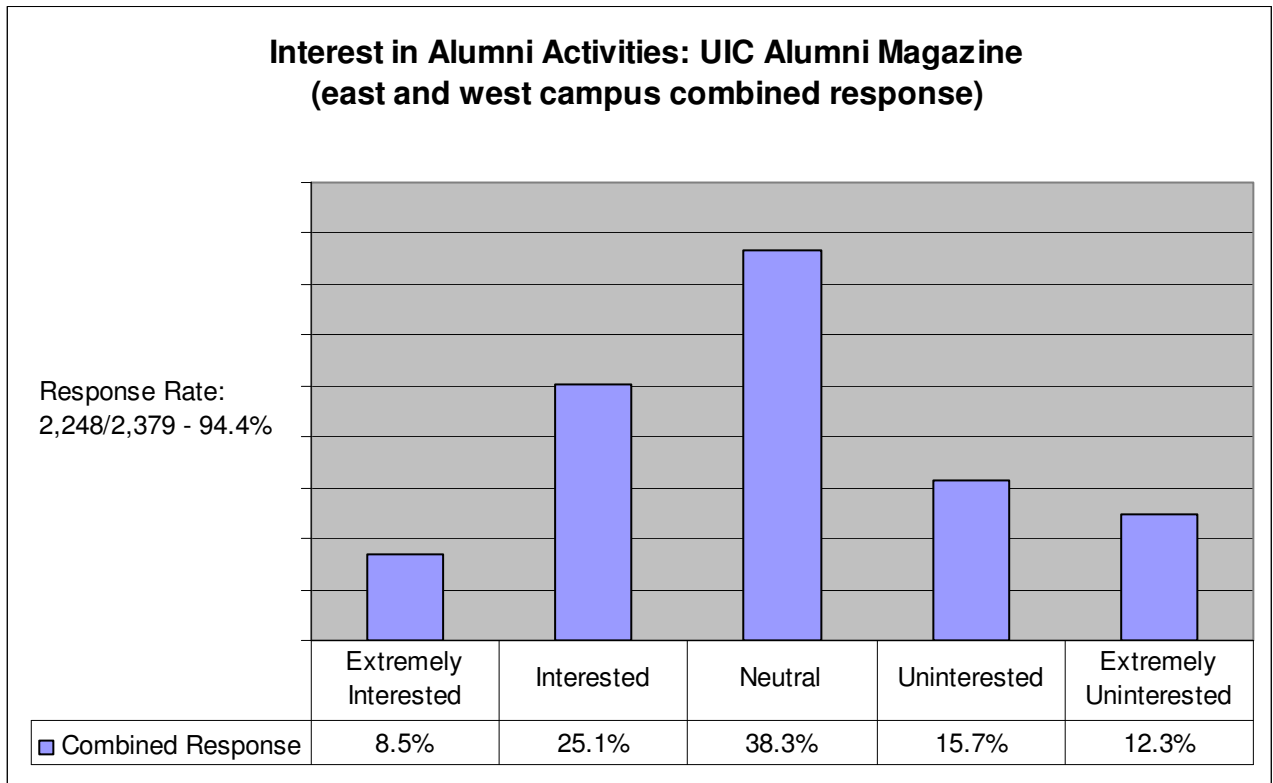


Interest In Alumni Activities: Career Counseling Services (east and west campus combined response)

Response Rate:
2,255/2,379 - 94.7%



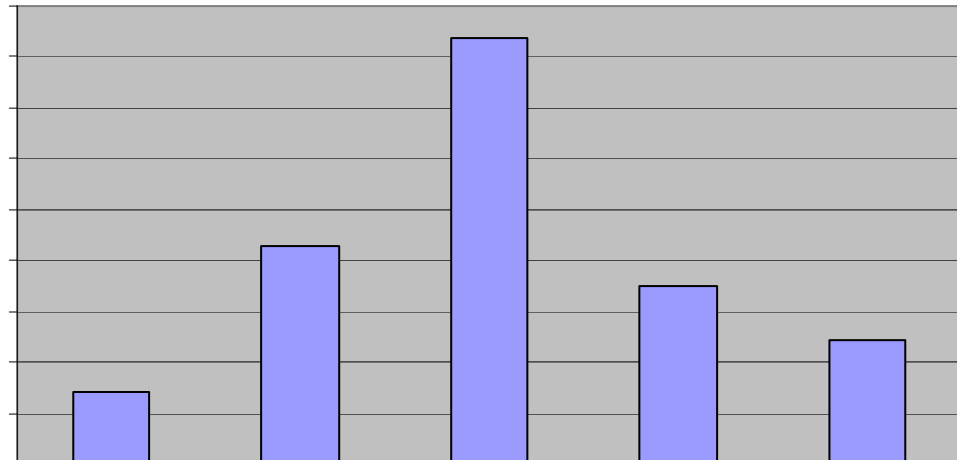
UIAA – UIC Graduating Student Exit Survey



UIAA – UIC Graduating Student Exit Survey AY 2007 - 2008

Interest in Alumni Activities: Regional Alumni Activities (east and west campus combined response)

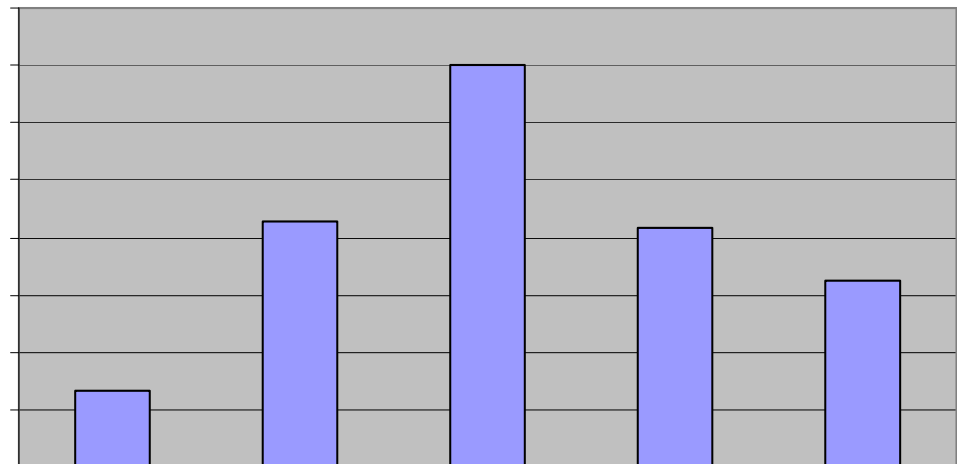
Response Rate:
2,238/2,379 - 94.0%



■ Combined Response	7.0%	21.5%	41.9%	17.4%	12.2%
---------------------	------	-------	-------	-------	-------

Interest in Alumni Activities: Athletic Events (east and west campus combined response)

Response Rate:
2,233/2,379 - 93.8%



■ Combined Response	6.6%	21.4%	35.0%	20.8%	16.3%
---------------------	------	-------	-------	-------	-------



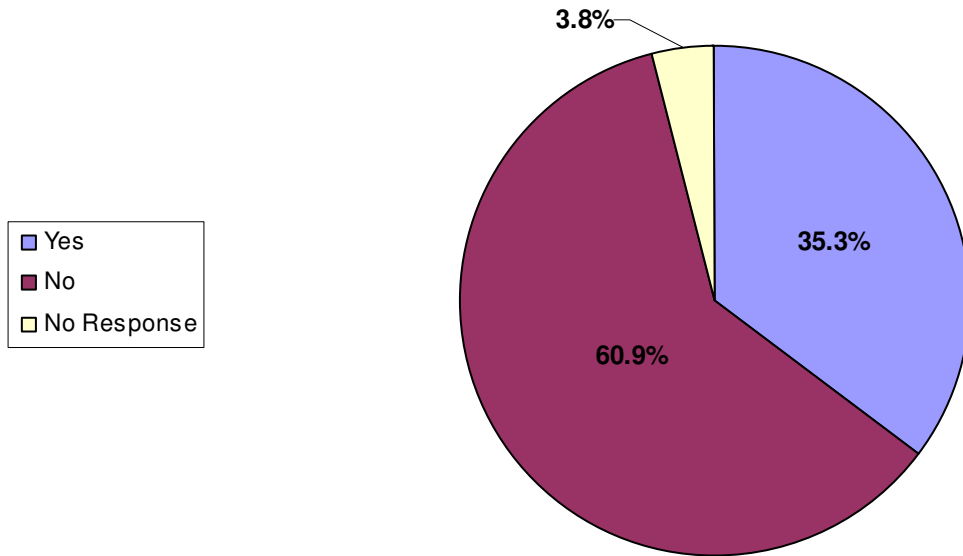
UNIVERSITY OF ILLINOIS ALUMNI ASSOCIATION

2008 EXIT SURVEY

Appendix D

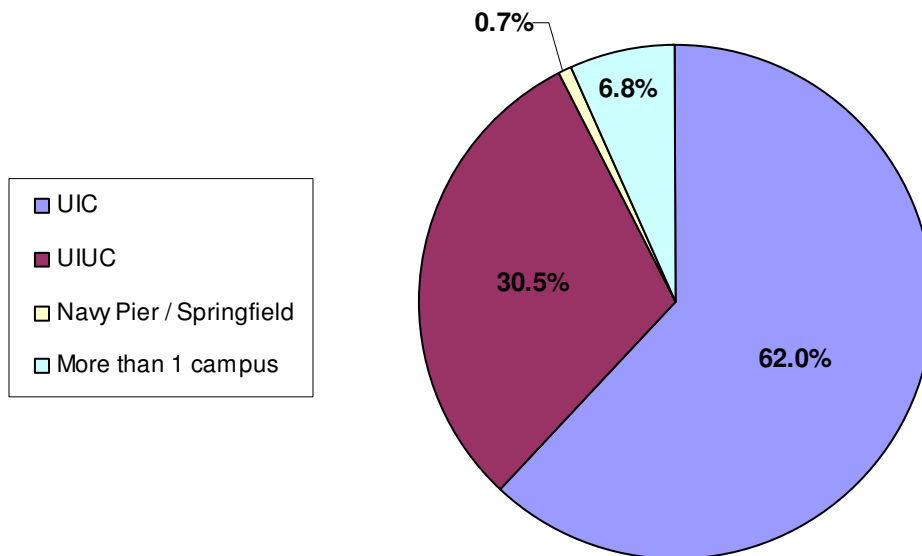
UIAA – UIC Graduating Student Exit Survey AY 2007 - 2008

Do you have family members who attended any of the
University of Illinois Campuses?
(combined campus response)



Response Rate: 2,288/2,379 - 96.2%

If yes, which campus?



Response Rate: 846/2,288 - 37%



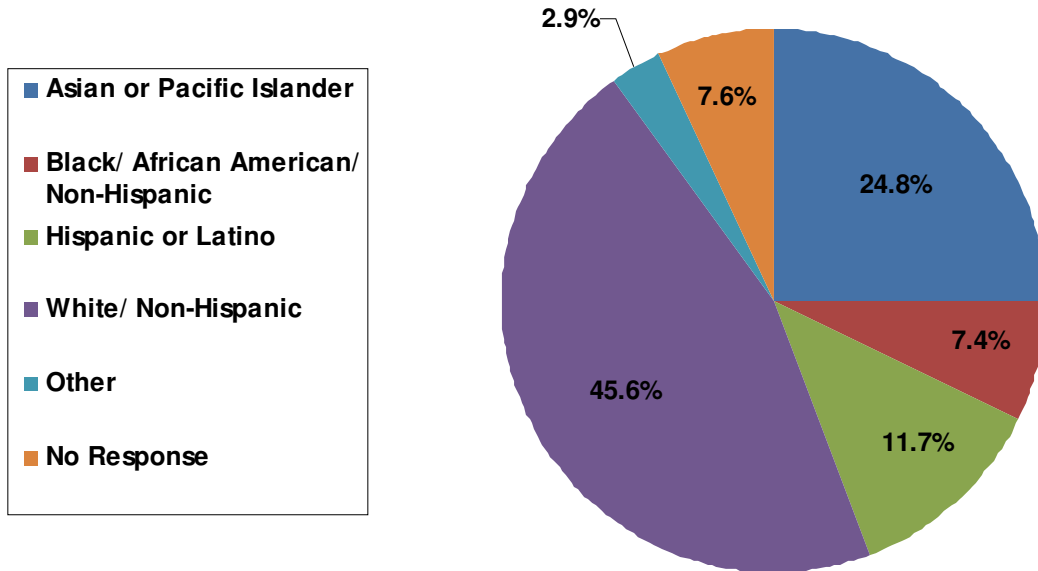
UNIVERSITY OF ILLINOIS ALUMNI ASSOCIATION

2008 EXIT SURVEY

Appendix E

UIAA – UIC Graduating Student Exit Survey AY 2007 - 2008

**Ethnicity of respondents
(combined campus response)**



Response Rate: 2,198/2,379 - 92.4%